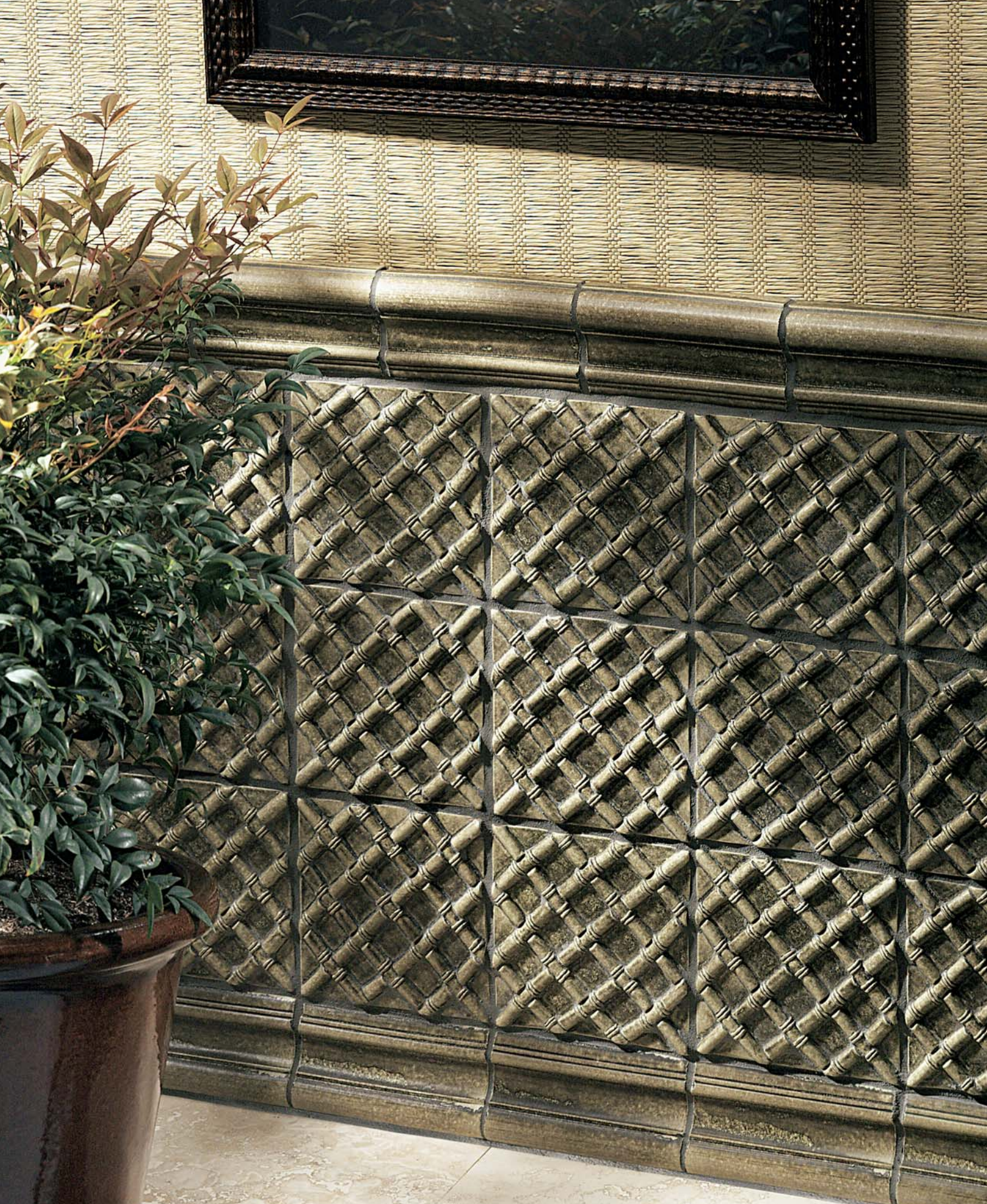


Artisan Heritage II

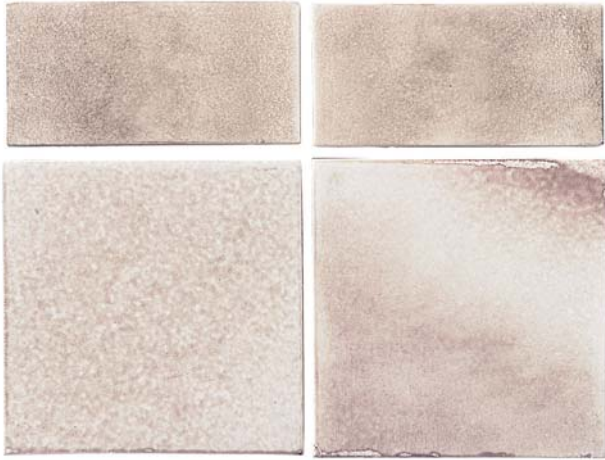
Jeffrey
Court





All tiles Woodland color: Hood Moulding; 6" x 6" Peter's Lattice

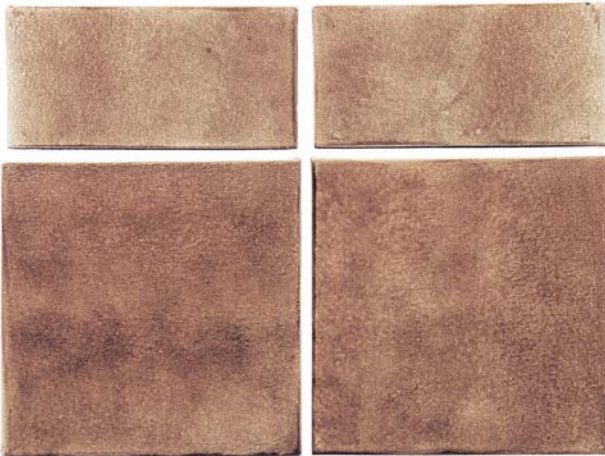
Field Tiles - 6" x 6" and 3" x 6"



Cumberland



Heartland*



Shenandoah*



Canyon



Woodland*

Artisan Heritage II made by Jeffrey Court in Corona, California is handcrafted in the tradition of the Arts-and-Crafts period of the early 1900's. Embrace variances in size, shade and color, as this is what makes artisan tiles so special. Colors with * denote a matte-crackle finish which should be sealed prior to grouting (see our crackle disclaimer). Artisan Heritage II is recommended for interior vertical surfaces.

*Matte-crackle glaze. Recommend sealing before grouting. See crackle disclaimer.

Cover: Shenandoah color: Hood Moulding; 6" x 6" Field; Various 1" x 1" Ceramic Buttons; Heartland color: 2" x 2" Dots

Matte Glazed Field Tiles

Handmade Decors

6" x 6" Decors - Available in all 5 Field colors



Artichokes and Lily



Onion and Dragonfly



Pears and Peas



Pineapple and Daylily



Grape Bunch and Deco /Corner



Stem and Grapes



Undulating Grape



AH Picture Frame





All tiles Cumberland color: Sonia's Flower; Sonia's Bullnose; 6" Field; Cornice Moulding



Anabel's Flower



Petite Fleur



Daphne's Flower



Elk



Sonia's Flower



Peter's Lattice



Bear



Sonia's Flower 3" x 6" and 3" x 3"
(Bullnose - Double Bullnose)



Peter's Lattice 3" x 6" and 3" x 3"
(Bullnose - Double Bullnose)

Handmade Decors

Decorative Panels & Buttons

Decorative Panels & Buttons - available in all 5 colors



The Rooster - 12 1/2" x 12 1/2" (Modules with 2 field tiles)



Country Hen



Plentiful Platter - 19" x 19" (Modules with 3 field tiles)

Ceramic and Metal Buttons - 1"



Button A



Metal B - Bronze Satin



Button B



Iron Rustic A
(Not for wet areas)



Button C



Metal B - Silver Antique



Metal B -
Brass Antique



Metal C -
Brass Verde Satin

Buttons: A, B & C available in all 5 metal and 5 ceramic colors

Mouldings, Borders & Dots - Available in all 5 colors



Daphne's Border - 3" x 6"



Needles and Cones - 3" x 6"



Rough Diamonds - 3" x 6"



Anabel's Moulding - 2" x 6"



Grape Vine - 2" x 6"



Rope and Weave - 2 1/2" x 6"

Liners



Burlap Weave - 1 1/4" x 8"



Curling Surf - 1 1/4" x 8"



Pine Bark - 1 1/4" x 8"



Bamboo - 1" x 8"

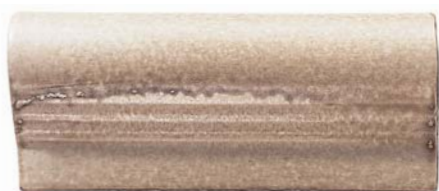
Mouldings



Hood Cap - 3" x 6"



Stop/Corner



Cornice Moulding - 2 1/2" x 6"



Stop/Corner



V Cap - 2 1/2" x 6"



Stop/Corner



AH Ogee - 1 1/2" x 6"



Stop



AH Dome Liner - 3/4" x 6"



Stop

Decor Dots - 2" x 2"



Acanthus



Plain Dot



Pinecone



Bumble Bee



Dragonfly



Frog



Grapes



Chili Peppers



Eggplant



Flower



Sunflower



Apple



Violet



Leaf



Seahorse



Turtle



Crab



Starfish

Mouldings & Decorative Accents



3" x 6" Field Tiles – Canyon; Linea & Square Mosaics – Bungalow; Hood Cap, Dome – Canyon.

Medley Patterns (Sheet .98 Sq. Ft.)



Batchelder



Craftsman



Bungalow

Linea Patterns (Sheet .98 Sq. Ft.)



Batchelder



Craftsman



Bungalow

M o u n t e d M o s a i c s

All sheets are nylon mesh mounted.



Your place is our passion.